

Grapevine

Barossa Village | April 2026



In this issue

CEO update	02
Residency highlights	04
Community highlights	07
Social calendar	11
Community connections calendar	12
Community news	19



Barossa Village
people at our heart

Pat's Café reopens!

Pat's Café is open again, and already the space is starting to feel like itself.

There are familiar sounds returning. Conversations drifting between tables, the clink of cups, people pausing a little longer to sit and enjoy the moment. It is something that has been quietly missed, and it is lovely to see it back.

We are delighted to welcome Sarah Steinert, owner of The Hunni Pot Café, into the Residency. From Monday to Friday, 9.00am to 3.00pm, Sarah is serving a range of hot and cold drinks along with sweet treats to enjoy throughout the day.

This first month has been a gentle opening. A chance for Sarah to get to know residents, staff and families, and for the café to find its rhythm again. Over the coming weeks, you will notice the space continue to evolve as we refresh the furniture and create a warm and welcoming place to gather.

Story continued – page 3

Hello and welcome



Message from our CEO Ben Hall

March has certainly been filled with opportunities to celebrate, discuss and explore what it means to be South Australian and part of a community.

The news has been rich with conversation about the State Election, By the time you read this we will know our new Premier. It has been great to see primary healthcare as a priority for each of the major parties, with both sharing visions for new hospitals in Northern Adelaide.

No matter what the outcome of the election we will continue to advocate for the aged care agenda, consistent with South Australia's Plan for Ageing Well 2026-2036 which was launched in February. If you have not read the plan, it sets out a statewide vision to ensure that as people live longer, they can also live better. It has four core priorities 1) be safe and well 2) have peace of mind 3) feel valued and visible and 4) participate in society. I hope that each of you feel this way every day already, but I'm keen to see how these priorities translate through to the states plans and action.

If you are arts and culture inclined, I'm sure the Adelaide Festival and Fringe would have featured in your calendar. For my family it's a very busy time with my daughter deeply immersed in musical theatre, and a lead role in NOW Productions' performance of Heathers. Along with all her friends, they put on an amazing performance enjoyed by 100's of people – I'm always a proud Dad.

But if you're sport inclined you've not been forgotten. The Adelaide 36ers will be entering their first grand final series in 18 years and may already be national champions. Adelaide Crows started the AFL season with a win and of course Port didn't, and with that comment, let the footy banter begin as we approach the Gather Round.

I share these stories as a reminder that despite what is happening far from home, and the concern that it may cause please remember that even in the face of conflict, our community's strength, compassion, and unity are unwavering. Be there for each other and know that we are here for you too.

Stay safe

Ben

Consumer Advisory Body meetings:

- Independent Living – 10am Tuesday 12th May 2026 at the Lodge
- Community Care – 2pm Wednesday 13th May 2026 at the Lodge
- Residential Care – 10am (10.30 start) Thursday 14th May 2026 at the Residency

REMINDER: These meetings are an open invitation to our community to attend.

A story behind the name

Cover story continued.

For Sarah, this has never just been about running a café. It started with a feeling. Growing up in the Barossa and now part of a sixth-generation Barossa family, she has always understood how important it is to have places where people can gather. Not just for an event, but in everyday life.

She remembers hosting long table dinners in Eden Valley, watching people arrive as strangers and leave as something more connected. There was a shift that happened around the table. Something simple, but powerful. That stayed with her.

Later, she opened a small Saturday café in the Eden Valley Institute, creating a space that echoed what the town once was. A place where people came together to share stories, lend a hand, and feel part of something bigger than themselves.

But the name, The Hunni Pot, came from a quieter moment. Out with her brumby horse, Hunni Bee, sharing an apple in the paddock, Sarah found herself reflecting. When she first got her, Hunni Bee was nervous, unsure, frightened of everything. Over time, she grew into a strong, vibrant and deeply trusting horse.

Standing there, Sarah recognised something in that journey. A reminder that growth does not always come easily, but it comes. That strength builds, even when it feels slow. She has always been drawn to bees. Not just because of their beauty, but because of what they represent. Despite their small size, they keep going. They create something rich and good, something to be shared. There is resilience and purpose in that.

In that moment, it all came together. The horse beside her, the quiet strength of bees, and her own sense of beginning something new - The Hunni Pot.

When the opportunity came to bring her café into the Residency, it felt like the kind of place her heart had been looking for. A place where connection already matters, and now you can see it unfolding. Residents meeting family for a coffee. Staff taking a moment to pause. Conversations starting between people who may not have crossed paths before. For Sarah, these are the moments she notices most. She calls them the little sprinkles in her day.

You might also see her daughter, Miyah, alongside her, learning the rhythm of the café, meeting residents, and becoming an intergenerational part of the space. It reminds Sarah of her own childhood, visiting her grandmother, who started the kiosk at Lyell McEwin Hospital, watching how something small could mean so much to someone's day.

Now, she is creating that same feeling here. There is more to come as the space continues to grow. New touches, new energy, and a celebration still to be shared. But already, something meaningful is taking shape. 🏠



Residency highlights

February has been busy, with many of the projects and ideas from resident feedback in 2025 starting to take shape.

Over the course of four weeks, the Wellbeing Team ran a wine tasting education session. This was a trial to explore what residents thought about small workshops. The feedback was very positive, with residents regularly attending without prompting, and the group really getting to know one another.

The course included learning to identify colour, aroma, flavour and mouthfeel in wine, as well as exploring the age of wines, faults, and different varieties. Residents also learnt about wine-making methods and how these contribute to the overall mouthfeel and flavour.

At the end of the four weeks, the group enjoyed a food and wine pairing session, along with a small test to reflect on what they had learnt. The whole series was a lot of fun and has encouraged the Wellbeing Team to consider more workshops in the future.

Another idea was a seasonal art series. This gave residents the opportunity to spend more time on their work, rather than needing to finish within the hour. It also created an opportunity to display artwork in the CD art gallery, helping to build interest and keep the space evolving. The resident art group has responded well, with a shared mission to create beautiful pieces for the residency. Here is Judy working on the summer series.

Intergenerational programs are a key focus for 2026. The wonderful students from Nuriootpa High visited to play bowls and spend time with residents. They were a great group, engaged and genuinely interested in connecting. A big thank you to their teacher, Lachie, for the support he brings. Next month, they will return to make jam drops from the That's My Jam book with residents.



Students from Nuriootpa High with residents

Easter Market

Residents expressed interest in holding an Easter Market. We have invited some of our regular craft contributors to be involved, and the art group and women's group are also keen to participate. Bookmarks, Easter chocolates, Easter cards and baskets are all being created.

Anything that doesn't sell will be shared on tables over the Easter weekend. 🏠



Sandra and Marg painting



Elaine crafting bookmarks



Wine tasting group

Intergenerational Playgroup!

Join the residents of Barossa Village for play, craft, stories, music, and more at intergenerational playgroup!

- Mondays 9.30am - 10.30am
- Children and families aged 0-5
- FREE!
- Call Karina on 08 8562 0300
- Barossa Village: 9 Atze Pde, Nuriootpa 5355



Community highlights

Throughout February, the excitement surrounding our Monday outings continued to grow, with each adventure offering a unique glimpse into the rich history and diverse natural beauty of our region.

One of the first highlights was a visit to Kapunda and Farrell Flat, where we marvelled at the stunning silo art. The vibrant murals told the stories of these towns in a captivating way, offering both an artistic and historical journey. The imagery reflected each town's heritage, showcasing local culture and pride.

Next, we ventured to the peaceful town of Mannum, where we visited the Hermann Gass Bird Sanctuary. It was the perfect place to immerse ourselves in nature and observe the wide variety of birdlife that calls this sanctuary home. The sights and sounds created a calm, tranquil atmosphere that stayed with us long after we left.

The standout experience of the month was our morning at the Marine Discovery Centre. This interactive visit allowed us to explore the wonders of our marine environment. Through hands-on learning stations and engaging exhibits, we gained a deeper appreciation for the vibrant ecosystems beneath our coastal waters and the importance of protecting them for future generations.

February offered a wonderful mix of experiences, from art-filled landscapes to peaceful sanctuaries and inspiring marine discoveries. It was a month that not only enriched our knowledge, but also strengthened our connection to the history, wildlife and environment around us. 🏠



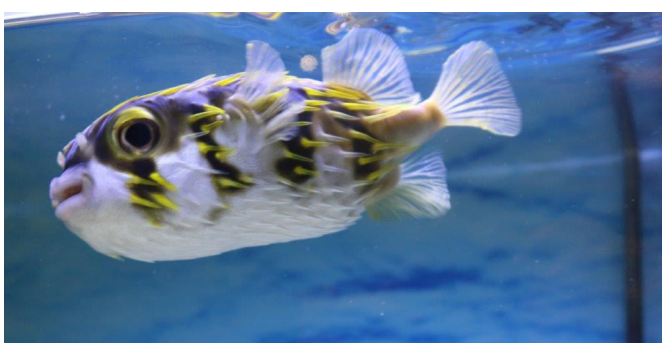
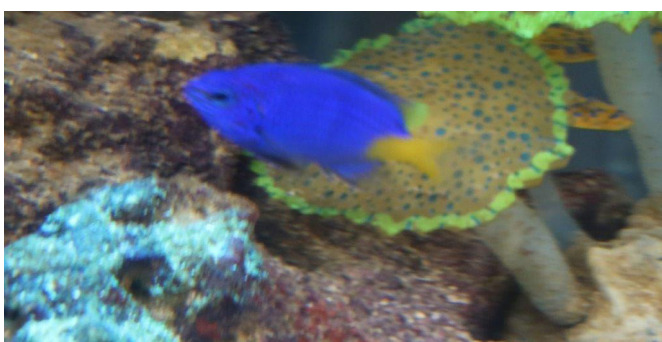
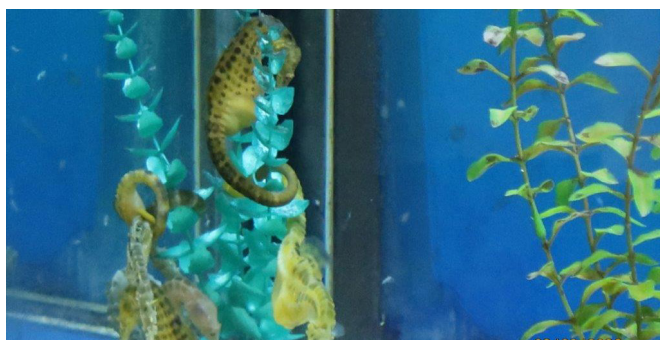
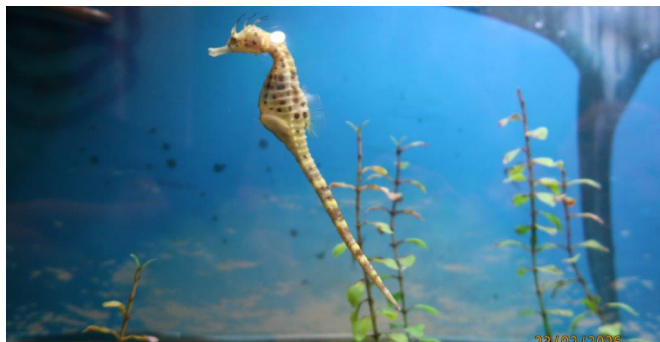
Community highlights



Radke's Visual Storytelling

Thank you for the great pictures taken at the Marine Discovery Centre





Introducing Suzanne & Amanda

Introducing Suzanne Hicks and Amanda Quodling, Barossa Village's Client Liaison Officers who together have over 40 years of experience working within aged care and across our community.

Suzanne and Amanda's day-to-day see them connecting clients with services, in particular supporting people into respite or residential care, or finding their retirement home as part of our independent living unit community.

But there is a unique part of their role that sees them helping people with the challenges and complexities of aged care. On any given day we receive 100's of phone calls and enquiries, most of which can be answered straight away. There are then those questions about aged care that can be quite complicated, in particular when there are other factors at play. When a loved one needs care and support and the pathway is not quite clear; navigating a way through these challenges is where Suzanne and Amanda excel.

They both get an immense amount of joy and satisfaction in those moments when they can bring relief and solutions to families when the challenge may otherwise seem insurmountable. If you ask them separately about what the love about their roles at the Barossa Village, their answer is quite simple: "being in a position to be able to help people as part of the Barossa Village team".

Meet Amanda

For almost 20 years, Amanda has been part of the Barossa Village community, working across a range of roles before finding her place as a Client Liaison Officer.

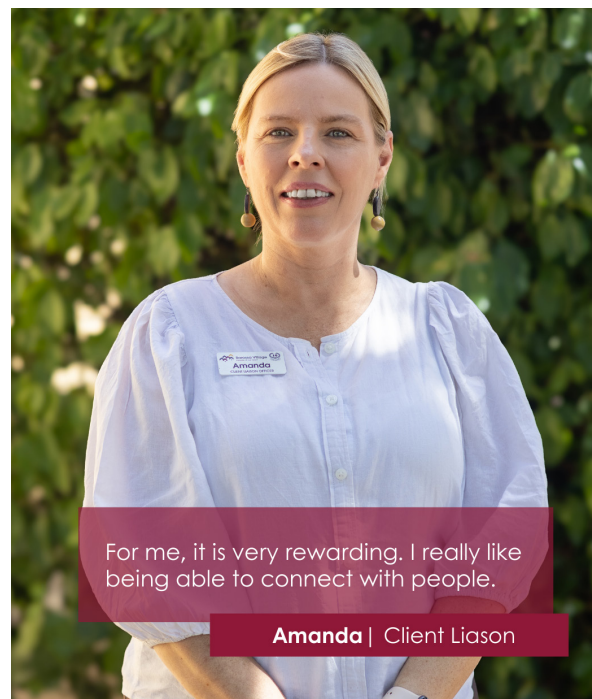
She describes the role as a perfect fit. As a people person, Amanda finds real joy in connecting with others and supporting them through important moments.

What she loves most is being able to share good news, whether it is offering someone a home in the residency or welcoming them into a unit. Walking alongside people as they begin their journey is something she finds truly special. For Amanda, the role is rewarding, fulfilling and absolutely worthwhile. 🏠



I really love meeting people and following them on their journey.

Suzanne | Client Liaison



For me, it is very rewarding. I really like being able to connect with people.

Amanda | Client Liaison

If you have any questions about how the Barossa Village may be able to help with your aged care needs, contact Barossa Village 8562 0300 (option 2)

Social calendar

FREE programs open to the wider community*

The ILU Social Calendar is a vibrant initiative hosted by Barossa Village Independent Living Unit residents who are passionate about creating a welcoming and connected community. It's designed for like-minded people looking to socialise, have fun, and build meaningful connections.

Unlike traditional programs, these events are led by residents, making them truly community-driven. With an ever-evolving program of activities, there's always something new to enjoy – a space where friendships grow and shared interests bring people together. We invite you to come along and be part of the fun!

For more information or to connect with program facilitators:
Contact the Barossa Village Lodge reception on 8562 0300 (Option 2).

*Some programs might ask for a gold coin or a plate of food to share.

<p>Games Group</p> <p>2.00pm</p> <p>Every Monday & Wednesday</p> <p>The Joy Rice Centre Scholz Ave, Nuriootpa</p>	<p>Happy Hour</p> <p>4.00pm</p> <p>Second Thursday each month</p> <p>The Joy Rice Centre Scholz Ave, Nuriootpa</p>	<p>Movie Night</p> <p>6.30pm</p> <p>Second & fourth Friday each month</p> <p>April 10 & 24</p> <p>The Joy Rice Centre Scholz Ave, Nuriootpa</p>	<p>Arts & Craft</p> <p>3.00pm</p> <p>Every Friday</p> <p>The Joy Rice Centre Scholz Ave, Nuriootpa</p>
<p>Bobby Dazzler</p> <p>Live music performances Search public Facebook group – The Bobby Dazzler Show</p>	<p>Music Night</p> <p>7.00pm</p> <p>Third Saturday each month</p> <p>April 18</p> <p>The Joy Rice Centre Scholz Ave, Nuriootpa</p>	<p>Men's Group</p> <p>1.30pm</p> <p>Second & fourth Wednesday each month</p> <p>April 8 & 22</p> <p>The Lodge/Outings</p>	<p>Market</p> <p>9am – 1pm</p> <p>Saturday</p> <p>April 4</p> <p>The Reusch Centre – 24a Murray St, Nuriootpa</p>

For more information call **8562 0300**

Community Connections calendar

What is Community Connections?

Community Connections is a paid program open to the broader community, with a structured fee schedule for participants. Each session is led by a Barossa Village staff member and includes available transport and meal options.

Whether you're eager to learn new skills, explore new experiences, or connect with others who share your passions, our dedicated coordinators are here to create unforgettable moments for you. At Barossa Village, we're committed to bringing "More Good Days" to our community through engaging and meaningful activities.

Bookings are essential.

To enquire, book, or find out more, contact Barossa Village, Lodge Reception on 8562 0300 (Option 2).

Visit us: 14 Scholz Avenue, Nuriootpa (Monday–Friday, 8.30am – 4.30pm)

What makes a good day for you?

Our programs are personalised, and we love hearing your ideas! If there's a place you'd like to visit or an activity that excites you, let us know – we value your feedback.

MONDAY	<ul style="list-style-type: none"> • Day trip group outings: pickup from 8.30am
TUESDAY	<ul style="list-style-type: none"> • Fitness for Life: 9.00am – 10.00am • Aqua fitness & hydrotherapy sessions: 1.30pm – 4.30pm 2.45pm: Level 3, Aqua Fit (Advanced) 3.15pm: Level 2, Aqua Flow (Intermediate) 3.45pm: Level 1, Aqua Ease (Beginner) • 1:1 Individual physiotherapist hydro session
WEDNESDAY	<ul style="list-style-type: none"> • 1:1 Home-based exercise program with Allied Health assistant
THURSDAY	<ul style="list-style-type: none"> • More Good Days Together weekly: 10.00am–2.00pm
FRIDAY	<ul style="list-style-type: none"> • 1:1 Home-based exercise program with Allied Health assistant • Mix and mingle: 10am – 11.30am • Indoor bowling: 10am – 12.30pm • Café luncheon: 12.30pm – 1.30pm • All-aboard bingo: 1.30pm – 2.30pm

Please note: Your health and wellbeing are our top priorities, and programs may be adjusted based on weather conditions. As this is a staffed calendar, last-minute cancellations or non-attendance may incur a charge.

What's on weekly...

Mondays:

Discover new experiences on our exciting day trips. Explore art, history, and culture through exhibitions and destinations. Enjoy a delicious meal, connect with like-minded individuals.

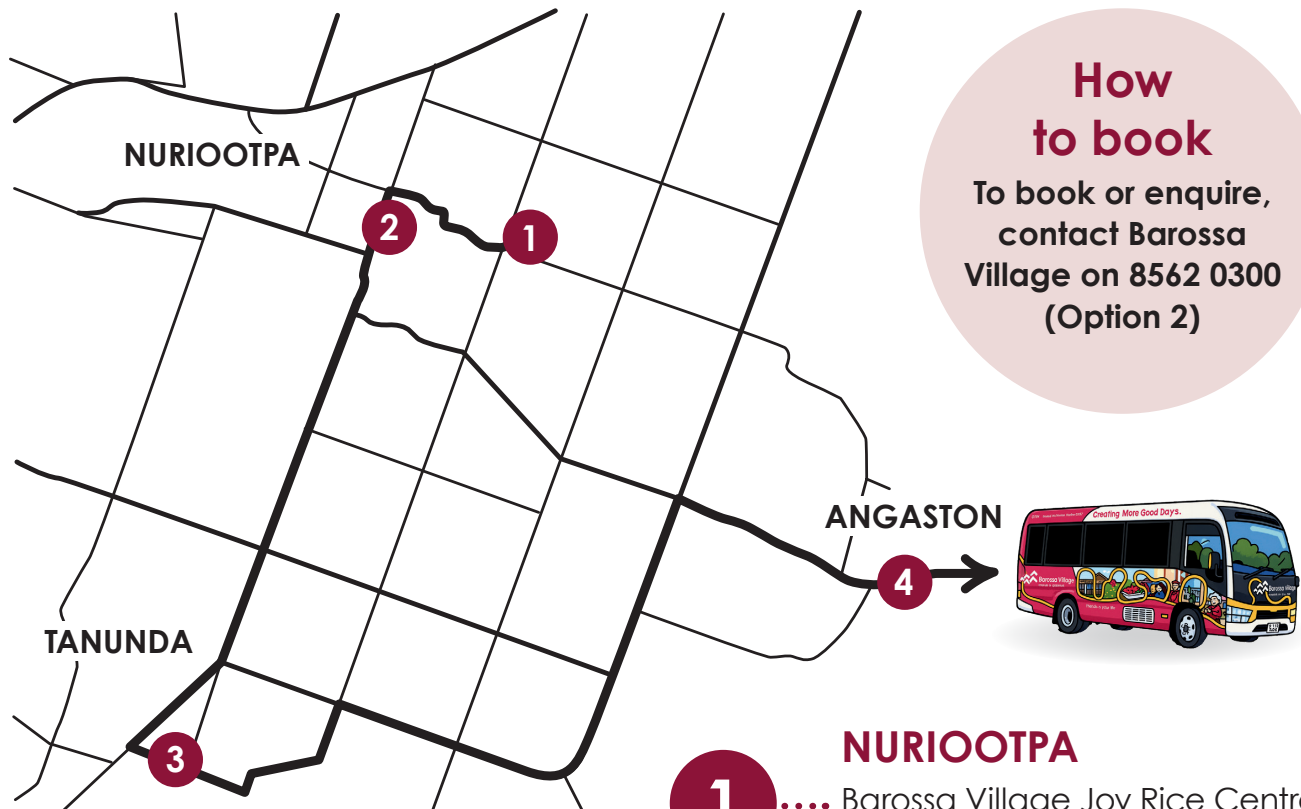
Date & Time	Activity	Lunch
6 April	Public Holiday	
13 April 8.30 – 4.30pm	South Australian Aviation Museum The South Australian Aviation Museum, located in Port Adelaide, South Australia, is an aviation museum which displays aircraft, aircraft engines, and rockets of relevance to South Australia, and the history of aviation and the aerospace industry in Australia Cost: \$12	Fasta Pasta Port Adelaide
19 April 8.30 – 4.30pm	Old Tailem Town- Pioneer Village Come and see what life was like years ago, each building is furnished within their periods. Cost: \$26	Tailem Bend Bakery
27 April 8.30 – 4.30pm	Greenfields Wetlands <i>(Due to weather this has been rescheduled for this month)</i> If you ever thought about trying bird watching here's a perfect place to start. Here you can spot the wood sandpiper, red-neck stint, red-capped plover and more.	Mawson Lakes Hotel
4 May 8.30 – 4.30pm	Maynards Lookout Walkers Flat This lookout is on the western side of the river giving wonderful views of the mighty River Murray and its side lagoons.	Mannum Bakery
11 May 8.30 – 4.30pm	Swan Reach Big Bend Cliffs The Big Bend cliffs near Swan Reach are the tallest cliffs on the Murray River and are over 200 million years old. See these amazing cliffs and the wildlife that inhabit them or explore the fossils of previous inhabitants.	Swan Reach Hotel
18 May 8.30 – 4.30pm	Self-Drive Tour Balaklava Balaklava came into existence in 1840 come and explore the features of the town.	Balaklava Bakery
25 May 8.30 – 4.30pm	Aussie Apricots Visit the third generation family run orchard on the beautiful Murray River at Mypolonga	Mypolonga Country Picnic Bakery

What's on weekly...

Monday day trips bus timetable

We're excited to share our Community Connections Out and About program has a fresh new way of travelling together, on our brand-new bus, Howie!

With more seats and comfort on board, we can now welcome more friends along. To ensure we spend less time on the road and more time enjoying our outings, we'll be transitioning from home pick-ups to a scheduled stop system.



How to book
 To book or enquire, contact Barossa Village on 8562 0300 (Option 2)



- 1** ... **NURIOOTPA**
 Barossa Village Joy Rice Centre
14 Scholz Ave, Nuriootpa
 Depart 8.45am | Return 3.30pm
- 2** ... **NURIOOTPA**
 Arthur Gladys Reusch OpShop (rear)
24A Murray St, Nuriootpa
 Depart 9am | Return 3.45pm
- 3** ... **TANUNDA**
 Barossa Village Magnolia Cluster
2 Magnolia St, Tanunda
 Depart 9.20am | Return 4.05pm
- 4** ... **NURIOOTPA**
 Barossa Village Schilling St Cluster
11 Schilling St, Angaston
 Depart 9am | Return 4.25pm

Please note:

- When booking for Monday trips, you'll be asked to select a departure and return location.
- Please arrive 5 minutes before departure.
- Times may vary slightly depending on traffic or conditions.

Tuesday:

Fitness for Life

Join our group exercise session designed specifically for retired individuals, with a tailored circuit-style class suitable for all fitness levels. Guided by Allied Health Assistants, you'll receive ongoing support to help you stay active, build strength, and maintain independence in a welcoming and social environment.

Benefits:

- Form social connections
- Build strength, flexibility and balance
- Improve functional abilities
- Enhance wellbeing and mental health

Time: 9am – 10am

Location: Barossa Village Residency, Atze Parade, Nuriootpa

1:1 Individual physiotherapist hydro

Did you know you can access a tailored 30-minute hydrotherapy session with a physiotherapist through Support at Home package. Speak with your care partner to arrange this personalised service.

Location: Barossa Village Residency, Atze Parade, Nuriootpa

Aqua fitness & hydrotherapy

2.45pm: Level 3, Aqua Fit

Advanced: A high-intensity, full-body workout designed for advanced swimmers. This 30-minute class focuses on cardio, strength, and resistance training, held in the deep end of the pool.

3.15pm: Level 2, Aqua Flow

Intermediate: Ideal for intermediate swimmers, this 30-minute class enhances balance, posture, flexibility, and endurance. Sessions take place in the shallow to middle section of the pool.

3.45pm: Level 1, Aqua Ease

Beginner: Perfect for beginners, this gentle 30-minute class helps build water confidence, improve balance and coordination, and promote flexibility and relaxation. Held in the shallow end of the pool.



What's on weekly...

Wednesday & Friday:

1:1 Exercise with Allied Health assistance

Home-based exercise program

- Boost your health with a personalised exercise plan in the comfort of your home!

Speak to your care partner to book a physiotherapist visit.

- Our physiotherapist will visit you to assess your needs and set achievable goals.
- They'll create a custom exercise program designed just for you, delivered by an Allied Health assistant through weekly sessions.



Barossa Christian Family Centre

ALL WELCOME | SUNDAYS 10:30am

Joy Rice Centre, Nuriootpa more information 0408 194 740

What's on weekly...

Thursday:

More Good Days

Purpose: To support the individual living with cognitive decline and their families by connecting with others to reduce social isolation, loneliness and providing emotional support.

Day: Held weekly on a Thursday

Time: 10am – 2pm

Venue: Barossa Village Joy Rice Centre, located at Scholz Avenue Nuriootpa

Cost: If you have a Support at Home Package charges can be attached to your package, please speak with your coordinator to discuss this further, or alternatively you can pay privately, please speak with a Wellbeing Partner.

Program: This program is designed to help individuals regain and maintain their independence by supporting everyday activities, promoting overall well-being, and empowering them to make decisions about their care. By focusing on both restoring or maintaining functional skills and exploring new skills or interests, the program enables participants to engage meaningfully in their daily lives. This approach enhances self-esteem, boosts confidence, and encourages personal growth through the discovery and development of new abilities

Outings: As part of our program, we may plan an outing within the local area. Families will be notified prior to this event outlining destination and purpose

Activities: Will be tailored to the persons skills, past interests and life experiences, to ensure engagement and a sense of purpose. Some examples include, gardening, music, exercising, walks, reading, pet companionship, activities tailored to the individual interests

Meals: Meals are included as part of the days program, if family wish to join in please order prior to the day and pay for your meal at reception.



Friday:**Friday social connections**

Location: Joy Rice Centre,
14 Scholz Ave, Nuriootpa

- **Mix and mingle:** 10am – 11.30am
- **Indoor bowling:** 10am – 12.30pm
- **Cafe luncheon:** 12.30pm – 1.30pm
(detailed weekly menu below)
- **All-aboard bingo:** 1.30pm – 2.30pm

**Friday Café menu**

Date	Lunch	Dessert
3 April	Good Friday	
10 April	Lamb Chops, Mash & Steamed Vegetables with Pepper Sauce	Apple Pie & Ice Cream
17 April	Roast Chicken with Dianne Sauce, Baby Potatoes, Peas & Honey Carrots	Tiramisu
24 April	Roast Beef, Chat Potatoes & Roast Vegetables with Yorkshire Puddings & Gravy	Black Forrest Cake
1 May	Butter Chicken & Rice with Steamed Vegetables	Cheesecake Pillows in Cinnamon Sugar
8 May	Roast Pork Loin, Roast Potatoes & Carrots with Broccoli Bake & Apple Sauce	Pavlova with Fresh Fruit & Cream
15 May	Shepherds Pie with Steamed Vegetables	Blueberry & Lemon Loaf with Custard
22 May	Beef Lasagne with Wedges & Salad	Fruit Trifle & Whipped Cream
29 May	Chicken Satay Fillets with Fried Rice & Steamed Vegetables	Apple Crumble & Ice Cream

Bookings and dietary requirements essential – phone 8562 0300 (Option 2).

Please confirm your attendance by the Wednesday prior. As spaces are limited, cancellations or non-attendance may incur a charge.

Community news

Blend Creative is an award-winning design studio working with clients across Australia. Since opening our doors in 1990, we have been the only Australian design studio with a social purpose focused on creating meaningful employment opportunities for people with disability who face significant barriers to work.

Together we have the power to create lasting change and break down barriers for people with disability.

We are very proud to partner with Barossa Village to produce each issue of this newsletter.



I get to unleash my logo designing skills and come up with great ideas for projects, it's a good feeling and a good creative process.

Joshua

SATURDAY COMMUNITY MARKETS

The Reusch Centre – Nuriootpa

When: First Saturday of each month

Next events: April 4 and May 2

Time: 9am – 1pm

Have some fun

U	I	E	C	N	A	M	O	V	S	S
R	Y	W	B	Y	A	O	L	A	A	E
L	L	O	O	N	X	R	D	L	G	M
A	N	A	A	K	E	A	I	E	E	A
B	J	A	C	Q	D	L	P	N	R	H
A	M	A	P	H	S	O	U	T	F	E
R	Q	C	U	E	B	V	C	I	J	A
R	G	O	R	F	A	E	X	N	A	R
O	B	S	R	B	E	F	G	E	S	T
W	A	E	U	A	R	Y	K	L	X	A
A	H	N	A	T	Z	D	U	O	L	C

CANDLE EASTER SPRING PAINT EGG
 BUTTERFLY CARROT CROSS TULIP LAMB
 CHOCOLATE CHURCH BUNNY CHICK CAKE

Let's Connect 8562 0300 | barossavillage.org

Residency 9 Atze Parade, Nuriootpa SA 5355

Corporate & Community Services (Lodge)

14 Scholz Avenue, Nuriootpa SA 5355



Barossa Village
people at our heart